

JVA/AAU BREW CITY BATTLE

PRESENTED BY NIKE



JANUARY 24-25, 2026

JANUARY 31-FEBRUARY 1, 2026

BAIRD CENTER | MILWAUKEE, WI

TOURNAMENT INFORMATION

CONTACT INFORMATION

JUNIOR VOLLEYBALL ASSOCIATION

905 N MAIN ST
NAPERVILLE, IL 60563
630-614-1380

EVENT STAFF CONTACTS:

JVA EVENT STAFF

TOURNAMENTS@JVAVOLLEYBALL.ORG

AAU VOLLEYBALL STAFF

VOLLEYBALL@AAUSPORTS.ORG

HOSTED BY:



WELCOME!

The board of directors, staff, and members of the JVA and AAU welcome you to the 2026 Brew City Battle presented by Nike. Brew City Battle will take place over two weekends and is a JVA and AAU co-hosted event at the Baird Center in downtown Milwaukee, WI. We work hard to ensure this is a high-quality event and a great experience for all participants and their families.

We want to thank our title sponsor **Nike**: official ball sponsor **Molten**; our housing service **Team Travel Source**; as well as our host the **Baird Center**. We hope our partnership with these groups makes your experience worthwhile.

The mission of JVA is to give back to the junior volleyball community through many avenues, including competitive and financially-accessible events. We have strived to make this the best event possible for everyone involved, but would love to hear your feedback! Good luck to all competing teams and thank you for supporting JVA!

Follow us @jvavolleyball

ADMISSIONS

SPECTATOR TICKET OPTIONS:

- \$35 Two Day Event Pass
- \$20 One Day Pass

WEEKEND 1 | [Purchase Tickets Here](#)

WEEKEND 2 | [Purchase Tickets Here](#)

- Spectators ages 10 & under receive free admission.
- Admissions must be purchased online – NO cash sales at the door.
- Wristbands will be provided and must be worn on your wrist at all times.
- Lost or forgotten tickets/wristbands can be replaced by presenting a photo ID.

REFUND POLICY:

- Refunds must be requested within 30 days of the date the ticket was purchased.
- Once a ticket is scanned, it is NOT assignable to any other individual or eligible for a refund.

Due to the Baird Center policies, all attendees will be subject to security screening upon entering the event. To help ensure guest safety, guests will be asked to return prohibited items to their vehicles. Please arrive early to allow time for the screening process and to avoid delays.

Any questions about admissions or to request a refund, please email:
tournaments@jvavolleyball.org

HOUSING

We have found a wonderful partnership with Team Travel Source (TTS) to handle all our housing needs. When searching for a housing service, our #1 priority is customer service.

Book Housing for Weekend 1 | [HERE](#)

Book Housing for Weekend 2 | [HERE](#)

The JVA/AAU does NOT have a "Stay to Play" policy. However, we have secured the best prices available and hope that you will choose to use the rooms in our block. In addition, TTS has arranged for incentives for teams to book rooms within our block.

If you experience any problems with booking your teams' housing please contact TTS Customer Service at volleyball@teamtravelsource.com.



PARKING

The Baird Center Garage offers indoor parking with easy access to all events at Baird Center. Abundant additional parking options can be found throughout the downtown area, from street spots to nearby garages, making Milwaukee a vibrant city that's easy to navigate.

Kilbourn Avenue Entrance

501 W. Kilbourn Ave., Milwaukee, WI 53203

Wells Street Entrance

500 W. Wells St., Milwaukee, WI 53203

Other Close Garages

- 330 W Wells St. Garage
- 6th & State Lot
- Isaac's Garage
- MATC Surface Lot

Visit the **Baird Center Website** for more parking information and to purchase parking passes.

AIRLINE DISCOUNTS

Southwest Airlines is pleased to offer Brew City Battle attendees discounted fares. To utilize the discount, book via SWABIZ® using [this link](#). Discount valid for travel 1/29/2026 to 2/3/2026.

United Airlines flight reservations can be made [online](#), using discount code ZRBP215010.

Delta Air Lines is pleased to offer special discounts for Junior Volleyball Association, use [this link](#) to book your flights. You may also call Conferences and Events® at 1.800.328.1111* Monday–Friday, 8:00 A.M. – 8:00 P.M. (EST) and refer to Meeting Event Code NY46M

TEAM CHECK-IN

WEEKEND 1

WEEKEND 1 (JAN 24-25)

Teams need to submit and finalize their roster within AES by
FRIDAY, JANUARY 9TH

Online Team Check-In

- Weekend 1
 - Opens at 12 A.M. CT January 18 and close at 12 P.M. CT January 22
 - Teams will need to check-in online before their arrival to verify that their roster is complete.
 - Club Directors with AES account access are the ONLY people that can check teams in online.

Credential pick-up times for all teams are:

- Weekend 1 | Baird Center, South Building 2nd Level
 - Friday, January 23
 - 4-7 P.M. CT
 - Saturday, January 24
 - AM Wave: 7-9 A.M. CT
 - PM Wave: 1-3 P.M. CT

Group Check-In is the PREFERRED method of pick up for your ENTIRE CLUB. Teams will not be allowed inside the playing hall without their credentials.

Coach Sign-In Form

- The Coach or Team Rep will turn in a [Coach Sign-In Form](#) that assures the JVA event staff that you have access to all the necessary forms.
- A hard copy of the Coach Sign-In Form **MUST** be turned in at Team Check-In.

TEAM CHECK-IN

WEEKEND 2

WEEKEND 2 (JAN 31-FEB1)

Teams need to submit and finalize their roster within AES by
FRIDAY, JANUARY 16TH

Online Team Check-In

- Weekend 2
 - Opens at 12 A.M. CT January 25 and close at 12 P.M. CT January 29
 - Teams will need to check-in online before their arrival to verify that their roster is complete.
 - Club Directors with AES account access are the ONLY people that can check teams in online.

Credential pick-up times for all teams are:

- Weekend 2 | Baird Center, South Building 2nd Level
 - Friday, January 30
 - 4-7 P.M. CT
 - Saturday, January 31
 - AM Wave: 7-9 A.M. CT
 - PM Wave: 1-3 P.M. CT

Group Check-In is the PREFERRED method of pick up for your ENTIRE CLUB.

Teams will not be allowed inside the playing hall without their credentials

TEAM ELIGIBILITY

AGE DEFINITIONS / WAIVERS

[2025-2026 Indoor Volleyball Age Definitions](#)

Please use the chart linked above to determine the correct age division for a player. The age determination date is July 1.

Age Waiver Policy:

- Age waivers are allowed for players who are in the same grade level as their peers and who are not more than a year older than the current age definition (above).
- Waivered player information must be received NO LATER than when rosters are due into AES.

To Request an Age Waiver for Weekend 1:

- Email the following documents to tournaments@jvavolleyball.org
 - Copy of player's birth certificate
 - Proof of grade
- All age waivers must be approved by the JVA Events Team

To Request an Age Waiver for Weekend 2:

- Email the following documents to volleyball@aausports.org
 - Copy of player's birth certificate
 - Proof of grade
- All age waivers for must be approved by the AAU Executive Committee.
- Once approval is received from AAU, please show proof to the JVA Event Staff - tournaments@jvavolleyball.org

TEAM ELIGIBILITY

PLAYER & COACH REQUIREMENTS

WEEKEND 1

JVA Insurance Forms

Every participant (coaches & players) listed on a team roster must complete the [JVA Insurance Waiver](#). This form must be collected electronically. Coaches do NOT need a hard copy and these forms do NOT need to be turned in at team check-in as they are accessible online.

Background Screen / APS Training

ALL adults listed on a roster at JVA insured events must complete the [Background Screen and APS Training](#). The cost is \$38 and the background screen is good for two event seasons.

Any adults with a cleared AAU background screen will be able to be added to a JVA roster in AES. AAU coaches do not need to complete the JVA Background Screen form.

Canadian teams (who are not AAU members) must submit an active police check that falls within the tournament date AND proof of completion of Making Ethical Decisions to tournaments@jvavolleyball.org. The Volleyball Canada course "Safe Sport Training" will also qualify for Assistant Coaches"

For more information on JVA's background screen policies, please [click here](#).

WEEKEND 2

AAU Membership

ALL players and coaches must have a valid AAU membership to participate.

For more information or to purchase an AAU membership, please [click here](#).

REGISTRATION, DIVISIONS, AND PLAYING WAVES

WEEKEND 1

Tournament Registration:

The entry fee for the tournament is \$650 per team. Refunds will be given, less 25% up until **Friday, December 26th**. No refund will be given thereafter for teams that withdraw. In the event that Brew City Battle is cancelled by JVA/AAU for any reason, each team will receive a refund of up to 100% at their discretion.

Divisions of Competition:

Competition will be offered in the following divisions:

- Boys
 - 12U, 13U, 14U-18U Classic
- Girls
 - 13U-18U

Playing Waves:

- AM Wave (8 A.M. start time)
 - Boys: 18s, 16s, 14s
 - Girls: 16s, 14s
- PM Wave (2:30 P.M. start time)
 - Boys: 17s, 15s, 13s, 12s
 - Girls: 18s, 17s, 15s, 13s

****Sunday playing times are determined by Saturday's finish.**

REGISTRATION, DIVISIONS, AND PLAYING WAVES

WEEKEND 2

Tournament Registration:

The entry fee for the tournament is \$650 per team. Refunds will be given, less 25% up until **Friday, January 2nd**. No refund will be given thereafter for teams that withdraw. In the event that Brew City Battle is cancelled by JVA/AAU for any reason, each team will receive a refund of up to 100% at their discretion.

Divisions of Competition:

Competition will be offered in 2 divisions, highest to lowest: OPEN, PREMIER

- 14 Open, Premier
- 15 Open, Premier
- 16 Open, Premier
- 17 Open, Premier
- 18 Open, Premier

Playing Waves:

- AM Wave (8 A.M. start time)
 - 18s, 16s
- PM Wave (2:30 P.M. start time)
 - 17s, 15s, 14s

****Sunday playing times are determined by Saturday's finish.**

SEEDING, SCHEDULE, & RESULTS

Seeding:

Using the best available information, teams will be seeded by a JVA/AAU member seeding committee, which may vary by event.

Tournament Schedule & Results:

The playing schedules will be posted approximately one week prior.

Teams will participate in pool play Saturday and bracket play on Sunday. It is our goal to have everyone finished by 6:00 P.M. on Sunday. It is recommended that teams traveling into Milwaukee do not schedule flights home on Sunday before 6:00 P.M.

Live schedules and results will be available through AES.

RULES OF PLAY

JVA/AAU follows the 2025-2027 USAV Indoor Domestic Competition Regulations.

Match Format/Warm-Up Procedures:

- All divisions will play best of three set formats. Divisions that have 3-team pool(s) with no cross over match in combination with 4 team pools in the same division will play all 3 sets to 25. Pool finish will be based on set percentage as all 3 sets will count for finish placement. 3-team pools are not our recommended format and we will do everything we can do to avoid them; however, there are times where it is unavoidable.
- All crossover and challenge matches will be "match play" best of 3 sets.
- All warm-ups will be 2-4-4 (2 min shared ball handling, first 4 min court time for serving team, and last 4 min court time for receiving team). Teams must serve within their court time. The team off the court should assist in ball shagging during the on-court teams' warm-up.
- A new libero can be designated before each set.

Officials and Team Officiating Responsibilities:

- The Head Official will schedule a First Referee (R1) for each match. Work teams will need to provide a Second Referee, Official Scorer, Libero Tracker and 2 Line Judges. The work team needs to report to the Head Official no later than the beginning of the serving team's warm-up. For each minute the work team is late or incomplete, one point will be given to their next opponent (up to 25-0 for forfeit). Each work team must have a rostered adult present and identified to the R1 during a team's work assignment.
- ****For Weekend 2 ONLY:** The R2 MUST be a rostered adult - this is an AAU rule, no exceptions.

RULES OF PLAY

BOYS DIVISIONS ONLY

Pre-Match Protocol (All Non-Gold Finals):

Prior to the start of the 1st set, both full teams will line up behind the service line. At the signal of the head official, both teams will wave to each other and spectators. The starting line up will remain on the court for the lineup check, and the libero shall be waived in by the head official.

Ties in Pool Play - DO NOT LEAVE YOUR COURT AREA UNTIL YOUR POOL HAS BEEN DECIDED!

TWO WAY TIE:

- The result of their head-to-head pool match will determine the winner in ALL CASES.
- There will be NO PLAYOFF regardless of whether it affects the GOLD.

THREE-WAY TIES (Teams advancing to GOLD):

- Head-to-head results are used to determine pool finishes for teams that are tied in Match record.
 - A team that beats all other teams with which it is tied in Match Record will finish ahead of the other teams in the pool.
 - If there are only two teams tied in matches, the head-to-head winner of those 2 teams earns the higher pool finish.
- Set percentage is the 2nd level of breaking ties and is used to rank a pool in which all three teams remain tied after applying the rules in step 1.
 - Teams with a higher set percentage finish ahead of teams with a lower set percentage.
 - If only two teams are tied in both match and set percentage, the team that won head-to-head receives the higher finish in the pool.

RULES OF PLAY

BOYS DIVISIONS ONLY

- Three-way tie for first place: If after steps 1 and 2, all three teams are still tied in match AND set percentage, the three teams will be seeded by points. The highest seed as determined by points, advances automatically. The highest seed will ref one set to 15 between the two lower seeds. The winner of this set takes the second spot in gold.
- Three-way tie for second place: If after steps 1 and 2, all three teams are still tied in match and set percentage, the three teams will be seeded by points. The highest seed will ref one set to 15 between the two lower seeds. The loser of the first set will ref one set to 15 between the winner of set 1 and the top seed. The winner of this set takes the second spot in gold.

THREE-WAY TIES (NO teams advancing to GOLD):

- If a tie occurs and no teams are able to advance to GOLD. Steps one and two from the above criteria will be used. In the case teams are still tied in matches and sets. Point differential will now be used to decide the pool. NO PLAY-OFF match will be played.

RULES OF PLAY

GIRLS DIVISIONS ONLY

Pre-Match Protocol (All Non-Gold Finals)

Prior to the start of the 1st set, both full teams will line up behind the service line. At the signal of the head official, both teams will wave to each other and spectators. The starting line up will remain on the court for the lineup check, and the libero shall be waived in by the head official.

Ties in Pool Play - There will be no tie-breaking playoff sets played at any level or age group for the girls divisions.

TWO WAY TIE

- The result of their head-to-head pool match will determine the winner in ALL CASES.
- There will be NO PLAYOFF regardless of whether it affects the GOLD.

THREE-WAY TIES

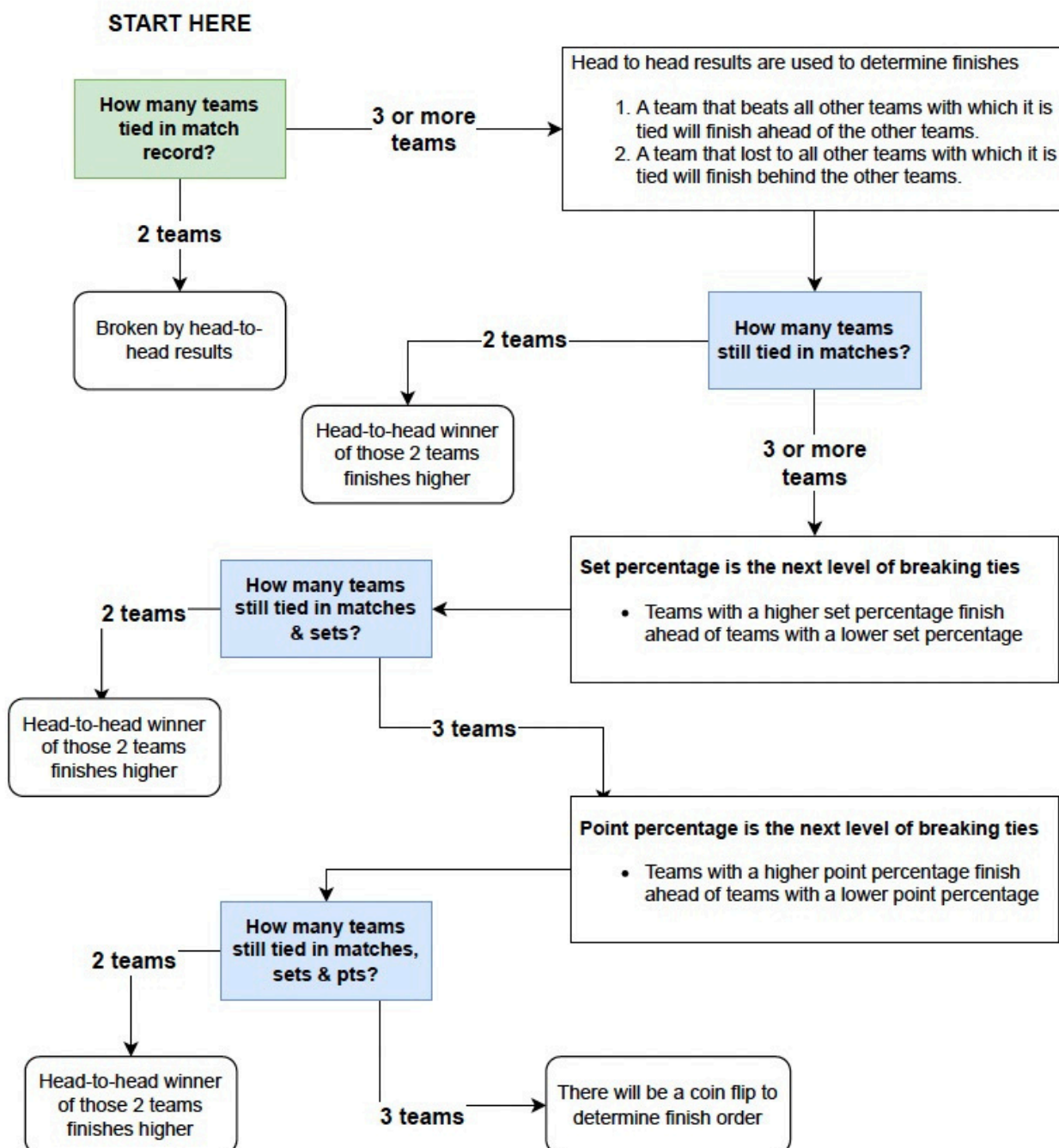
- Head-to-head results are used to determine pool finishes for teams that are tied in Match record.
 - A team that beats all other teams with which it is tied in Match Record will finish ahead of the other teams in the pool.
 - If there are only two teams tied in matches, the head-to-head winner of those 2 teams earns the higher pool finish.
- Set percentage is the 2nd level of breaking ties and is used to rank a pool in which all three teams remain tied after applying the rules in step 1.
 - Teams with a higher set percentage finish ahead of teams with a lower set percentage.
 - If only two teams are tied in both match and set percentage, the team that won head-to-head receive the higher finish in the pool.
- If steps one and two do not break the tie, the following tie-breaking procedure will be utilized to break ties: Match %, Head to Head, Set % and Point %.
- If point percentage is also tied, there will be a coin flip(s) to determine finish in pool.
- See flow chart on page 19 for further guidance.

RULES OF PLAY

GIRLS DIVISIONS ONLY

PROCEDURES FOR BREAKING TIES TO DETERMINE POOL FINISH

No tiebreaking sets will be played to break any ties



RULES OF PLAY

Guidelines for Boys' Playing on Girls' Teams at JVA Hosted Events:

- An all boys' team may not compete in a girls' division, no matter the age group.
- Coed teams are allowed to play, but may not have more than three boys on the floor at one time.
- Boys are able to play in specific girls' divisions based on their age definition.
- No 14U+ boy may participate in a girls' event.
- Club Directors must receive written permission from the JVA Tournament Director BEFORE the roster due date. Each request will be determined on a case by case basis.
- For more information, please visit our website by clicking [here](#) and reading under "Participation of Play".

Code of Conduct / Disciplinary Action

- JVA is committed to the safety and well-being of every participant and spectator at our events and will not tolerate harassment, discrimination, abuse, or misconduct.
- JVA holds the right to remove anybody from our events who does not abide by our code of conduct.
- View the JVA Zero Tolerance Policy [HERE](#)

MISCELLANEOUS

Volleyball Rental

There will not be any volleyballs available to rent. All teams are responsible for bringing their own volleyballs for warmups. Game balls will be provided.

Athletic Trainers

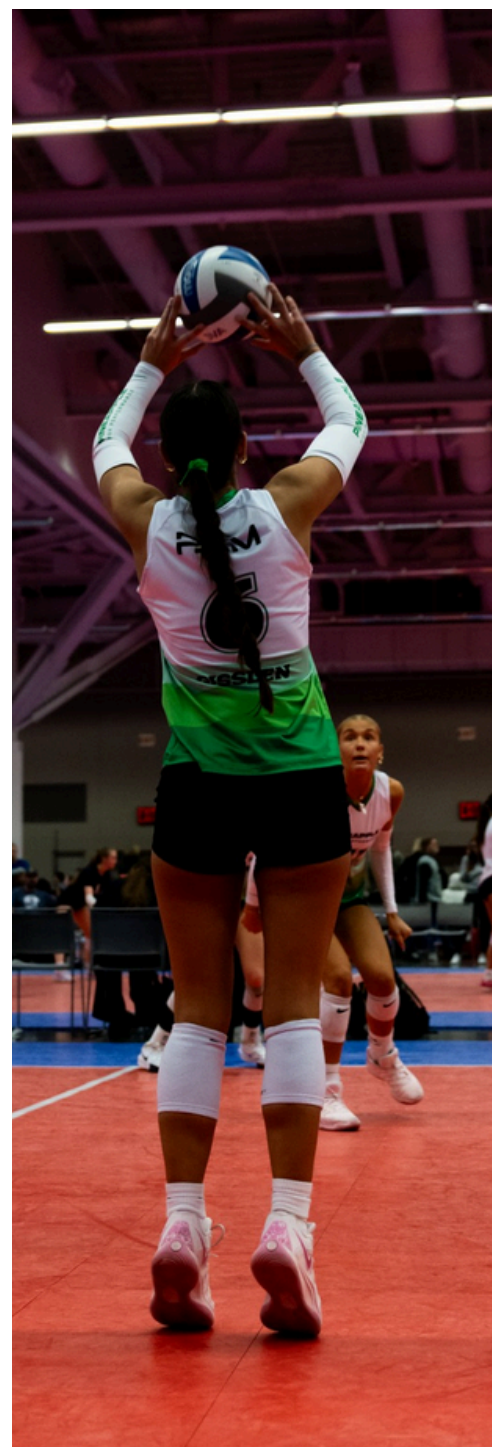
Athletic Trainers will be located inside the playing hall by the main tournament desk.

Facility Rules

No outside food or beverage allowed. No coolers will be allowed. There will be seating provided along each court for spectators. Camping chairs will NOT be allowed in the Convention Center due to a potential fire hazard.

Tournament Souvenirs

Our Pro-Shop will have tournament t-shirts and a wide variety of JVA and AAU apparel.



JVA
JUNIOR VOLLEYBALL ASSOCIATION

