

JVA CHARM CITY CHALLENGE

PRESENTED BY NIKE



JANUARY 31-FEBRUARY 1, 2026

BALTIMORE CONVENTION CENTER
BALTIMORE, MD

TOURNAMENT INFORMATION

CONTACT INFORMATION

JUNIOR VOLLEYBALL ASSOCIATION
905 N MAIN ST
NAPERVILLE, IL 60563
630-614-1380

JVA EVENT STAFF:

TOURNAMENTS@JVAVOLLEYBALL.ORG

HOSTED BY:



WELCOME!

The board of directors, staff, and members of the JVA welcome you to the 2026 JVA Charm City Challenge presented by Nike. Charm City Challenge is a two-day event located in Baltimore, MD that is hosted by JVA. This event will bring in around 350 teams from the Midwest, Northeast and East Coast area. We work hard to ensure this is a high-quality event and a great experience for all participants and their families.

We want to thank our title sponsor **Nike**; official ball sponsor **Molten**; our housing service **Team Travel Source**; as well as our host the **Baltimore Convention Center**. We hope our partnership with these groups makes your experience worthwhile.

The mission of JVA is to give back to the junior volleyball community through many avenues, including competitive and financially-accessible events. We have strived to make this the best event possible for everyone involved, but would love to hear your feedback! Good luck to all competing teams and thank you for supporting JVA!

Follow us @jvavolleyball

ADMISSIONS

SPECTATOR TICKET OPTIONS:

- \$35 Two Day Event Pass
- \$20 One Day Pass
- Spectators ages 10 & under receive free admission.
- Admissions must be purchased online – NO cash sales at the door.
- Wristbands will be provided and must be worn on your wrist at all times.
- Lost or forgotten tickets/wristbands can be replaced by presenting a photo ID.

REFUND POLICY:

- Refunds must be requested within 30 days of the date the ticket was purchased.
- Once a ticket is scanned, it is NOT assignable to any other individual or eligible for a refund.

[CLICK HERE TO PURCHASE YOUR TICKET\(S\)](#)

Any questions about admissions or to request a refund, please
email: **tournaments@jvavolleyball.org**

HOUSING

We have found a wonderful partnership with Team Travel Source (TTS) to handle all our housing needs. When searching for a housing service, our #1 priority is customer service.

[CLICK HERE TO BOOK YOUR HOUSING](#)

The JVA/AAU does NOT have a "Stay to Play" policy. However, we have secured the best prices available and hope that you will choose to use the rooms in our block. In addition, TTS has arranged for incentives for teams to book rooms within our block.

If you experience any problems with booking your teams' housing please contact TTS Customer Service at volleyball@teamtravelsource.com.



PARKING

We recommend booking convenient and affordable parking in advance through SpotHero, the nation's leading parking reservations app.

To reserve your parking spot for the Baltimore Convention Center, visit the [Baltimore Convention Center SpotHero Parking Page](#).

For more parking information and directions to the Baltimore Convention Center, [click here](#).

AIRLINE DISCOUNTS

Southwest – Southwest Airlines is pleased to offer JVA Charm City Challenge attendees discounted fares. To utilize the discount, book via SWABIZ® using [this link](#). Discount valid for travel 1/29/2026 to 2/3/2026.

United Airlines: To make flight reservations online please [click here](#) and use discount code ZRBP215010.

Delta Air Lines is pleased to offer special discounts for Junior Volleyball Association. Please [click here](#) to book your flights. You may also call Conferences and Events® at 1.800.328.1111* Monday–Friday, 8:00 A.M. – 8:00 P.M. (EST) and refer to Meeting Event Code NY46M

TEAM CHECK-IN

**Teams need to submit and finalize their roster in AES by
FRIDAY, JANUARY 16TH**

Online Team Check-In

- Opens at 12 A.M. ET January 25 and close at 12 P.M. ET January 29
 - Teams will need to check-in online before their arrival to verify that their roster is complete.
 - Club Directors with AES account access are the **ONLY** people that can check teams in online.

Credential pick-up times for all teams are:

- Baltimore Convention Center - Charles Street Entrance
 - Friday, January 30
 - 4-7 P.M. ET
 - Saturday, January 31
 - AM Wave: 7-9 A.M. ET
 - PM Wave: 1-3 P.M. ET

Group Check-In is the PREFERRED method of pick up for your ENTIRE CLUB. Teams will not be allowed inside the playing hall without their credentials.

Coach Sign-In Form

- The Coach or Team Rep will turn in a [Coach Sign-In Form](#) that assures the JVA event staff that you have access to all the necessary forms.
- A hard copy of the Coach Sign-In Form **MUST** be turned in at Team Check-In.

TEAM ELIGIBILITY

AGE DEFINITIONS / WAIVERS

2025-2026 Indoor Volleyball Age Definitions

Please use the chart linked above to determine the correct age division for a player. The age determination date is July 1.

Age Waiver Policy:

- Age waivers are allowed for players who are in the same grade level as their peers and who are not more than a year older than the current age definition (above).
- Waivered player information must be received NO LATER than when rosters are due into AES.
- All age waivers must be approved by the JVA Events Team

To Request an Age Waiver:

- Email the following documents to tournaments@jvavolleyball.org
 - Copy of player's birth certificate
 - Proof of grade
 - Jersey Number

TEAM ELIGIBILITY

PLAYER & COACH REQUIREMENTS

JVA Insurance Forms

Every participant (coaches & players) listed on a team roster must complete the [JVA Insurance Waiver](#). This form must be collected electronically. Coaches do NOT need a hard copy and these forms do NOT need to be turned in at team check-in as they are accessible online.

The Coach or Team Rep will turn in a [Coaches Sign-In Form](#) that assures the JVA event staff that you have access to all the necessary forms. A hard copy of the Coach Sign-In Form MUST be turned in at Team Check-In.

Background Screen / APS Training

ALL adults listed on a roster at JVA insured events must complete the [Background Screen and APS Training](#). The cost is \$38 and the background screen is good for two event seasons.

Any adults with a cleared AAU background screen will be able to be added to a JVA roster in AES. AAU coaches do not need to complete the JVA Background Screen form.

Canadian teams (who are not AAU members) must submit an active police check that falls within the tournament date AND proof of completion of Making Ethical Decisions to tournaments@jvavolleyball.org. The Volleyball Canada course "Safe Sport Training" will also qualify for Assistant Coaches"

For more information on JVA's background screen policies, please [click here](#).

REGISTRATION, DIVISIONS, AND PLAYING WAVES

Tournament Registration:

The entry fee for the tournament is \$650 per team. Refunds will be given, less 25%, up until **Friday, January 2nd**. No refunds will be given thereafter for teams that withdraw. In the event that Charm City Challenge is cancelled by JVA for any reason, each team will receive a refund up to 100% at JVA's discretion.

Divisions of Competition:

Competition will be offered in the following divisions:

- OPEN (Highest level)
- PREMIER (Mid-level)
- CLUB (Lowest level)

- 12U Division
- 13U-14U Open & Club
- 15U-17U Open, Premier & Club
- 18U Open & Club

Playing Waves

- AM Wave (8 A.M. start time)
 - 18's, 16's, 14's, 12's
- PM Wave (2:30 P.M. start time)
 - 17's, 15's, 13's, 12's

****Sunday playing times are determined by Saturday's finish.**

SEEDING, SCHEDULE, AND RESULTS

Seeding:

Using the best available information, teams will be seeded by a JVA member seeding committee, which may vary by event.

Tournament Schedule & Results:

The playing schedules will be posted approximately one week prior.

Teams will participate in pool play Saturday and bracket play on Sunday. It is our goal to have everyone finished by 6:00 P.M. on Sunday. It is recommended that teams traveling into Milwaukee do not schedule flights home on Sunday before 6:00 P.M.

Live schedules and results will be available through AES.

RULES OF PLAY:

JVA follows the 2025-2027 USAV Indoor Domestic Competition Regulations.

Match Format/Warm-Up Procedures:

- All divisions will play best of three-set formats. Divisions that have 3-team pool(s) with no cross-over match in combination with 4 team pools in the same division will play all 3 sets to 25. Pool finish will be based on set percentage as all 3 sets will count for finish placement. 3-team pools are not our recommended format and we will do everything we can do to avoid them. However, there are times where it is completely unavoidable.
- All crossover and challenge matches will be "match play" best of 3 sets.
- All warm-ups will be 2-4-4 (2 min shared ball handling, first 4 min court time for serving team, and last 4 min court time for receiving team). Teams must serve within their court time. The team off the court should assist in ball shagging during the on-court teams' warm-up.

Officials and Team Officiating Responsibilities:

- The Head Official will schedule a First Referee for each match. Work teams will need to provide a Second Referee (R2), Official Scorer, Libero Tracker and 2 Line Judges. An adult on the official roster needs to be court side at all times. The work team needs to report to the Head Official no later than the beginning of the serving team's warm-up. For each minute the work team is late or incomplete, one point will be given to their next opponent (up to 25-0 for forfeit). Each work team must have an adult present and identified to the R1 during a team's work assignment.

RULES OF PLAY

TIEBREAKERS

Pre-Match Protocol (All Non-Gold Finals):

Prior to the start of the 1st set, both full teams will line up behind the service line. At the signal of the head official, both teams will wave to each other and spectators. The starting line up will remain on the court for the lineup check, and the libero shall be waived in by the head official.

THERE WILL BE NO TIE-BREAKING PLAYOFF SETS PLAYED AT ANY LEVEL OR AGE GROUP.

TWO WAY TIE:

- The result of their head-to-head pool match will determine the winner in ALL CASES.
- There will be NO PLAYOFF regardless of whether it affects the GOLD.

THREE-WAY TIES:

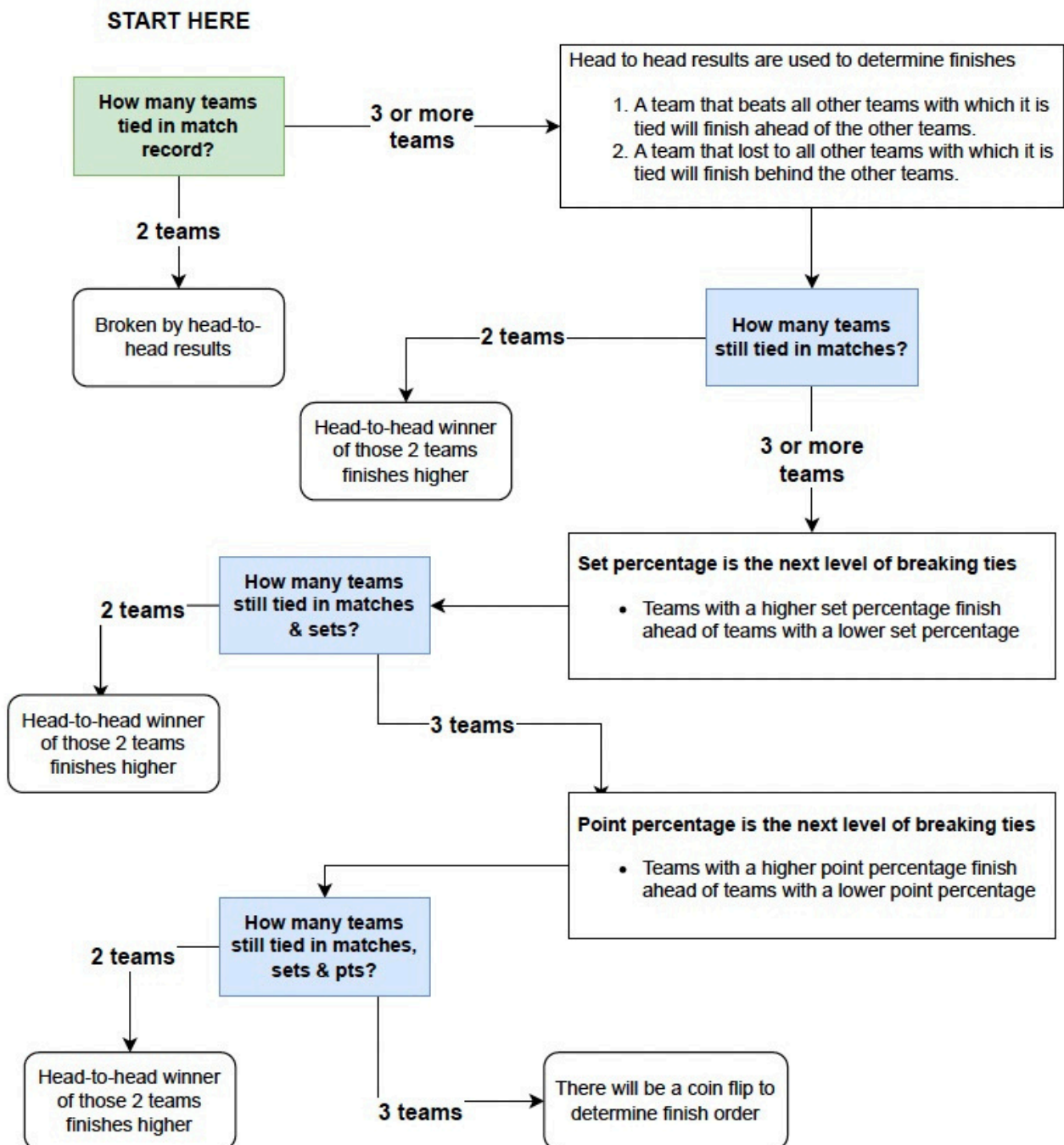
- Head-to-head results are used to determine pool finishes for teams that are tied in Match record.
 - A team that beats all other teams with which it is tied in Match Record will finish ahead of the other teams in the pool.
 - If there are only two teams tied in matches, the head-to-head winner of those 2 teams earns the higher pool finish.
- Set percentage is the 2nd level of breaking ties and is used to rank a pool in which all three teams remain tied after applying the rules in step 1.
 - Teams with a higher set percentage finish ahead of teams with a lower set percentage.
 - If only two teams are tied in both match and set percentage, the team that won head-to-head receive the higher finish in the pool.
- If steps one and two do not break the tie, the following tie-breaking procedure will be utilized to break ties: Match %, Head to Head, Set % and Point %.
- If point percentage is also tied, there will be a coin flip(s) to determine finish in pool.
- See flow chart on page 15 for further guidance.

RULES OF PLAY

TIEBREAKERS

PROCEDURES FOR BREAKING TIES TO DETERMINE POOL FINISH

No tiebreaking sets will be played to break any ties



RULES OF PLAY

Guidelines for boys' Playing on girls' teams at JVA Hosted Events:

- An all boys' team may not compete in a girls' division, no matter the age group.
- Coed teams are allowed to play, but may not have more than three boys on the floor at one time.
- Boys are able to play in specific girls' divisions based on their age definition.
- No 14U+ boy may participate in a girls' event.
- Club Directors must receive written permission from the JVA Tournament Director BEFORE the roster due date. Each request will be determined on a case by case basis.
- For more information, please visit our website by clicking [here](#) and reading under "Participation of Play".

Code of Conduct / Disciplinary Action

- JVA is committed to the safety and well-being of every participant and spectator at our events and will not tolerate harassment, discrimination, abuse, or misconduct.
- JVA holds the right to remove anybody from our events who does not abide by our code of conduct.
- View the JVA Zero Tolerance Policy [HERE](#)

MISCELLANEOUS

Volleyball Rental

JVA does not have volleyball rental available. All teams are responsible for bringing their own volleyballs for warmups. JVA game balls will be provided.

Athletic Trainers

Athletic Trainers will be available inside the playing hall by the tournament desks.

Facility Rules

No outside food or beverage allowed. No coolers will be allowed. There will be seating provided along each court for spectators. Camping chairs will NOT be allowed in the Convention Center due to a potential fire hazard.

Tournament Souvenirs

Our Pro-Shop will have tournament t-shirts and a wide variety of JVA apparel.



JVA
JUNIOR VOLLEYBALL ASSOCIATION